

How To synchronize music to a Toshiba Gigabeat F series portable music player with Rockbox firmware using the MediaMonkey.



Purpose

The purpose of this document is to provide an easy to follow procedure for using MediaMonkey to synchronize / manage your music on a Gigabeat digital media player.

I read a couple posts asking how to use WMP or MediaMonkey to synchronize music to Gigabeat Rockbox on the MyGigabeat.com forum. I use MediaMonkey and decided to put this document together. It's intended for those who are not tech savvy and/or would prefer a tool instead of using windows explorer to load music on their player.

Assumptions

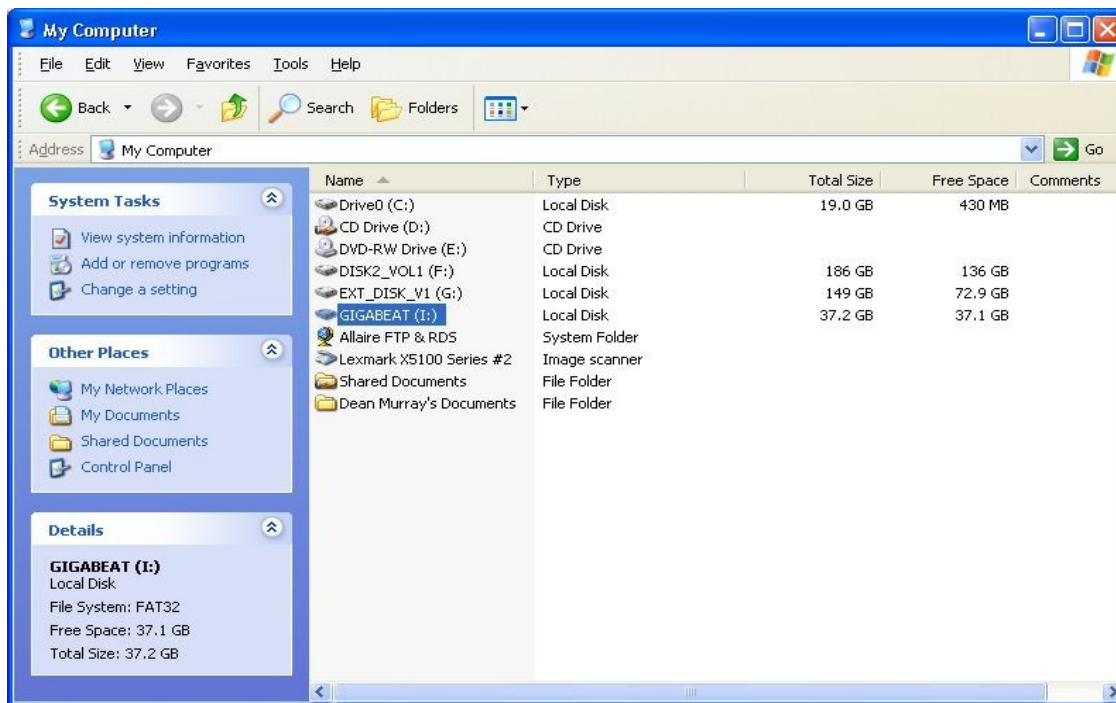
- It is assumed that the user has installed MediaMonkey on their PC and are using it to manage their music.
- It is also assumed that the user wants to use MediaMonkey to synchronize music to their Toshiba Gigabeat digital media player.
- It is assumed that the use has a basic knowledge on how to use MediaMonkey.
- It is also assumed that the user has loaded Rockbox firmware on their Gigabeat, replacing the software provided by Toshiba.
- It is assumed that the Gigabeat is connecting to a PC running Windows 2000 or XP.
- Throughout this document the computer the “I: drive” is referenced for the Gigabeat device attached to the computer. This just happens to be the drive assigned by the author's PC. You will need to substitute your own drive.

Procedure

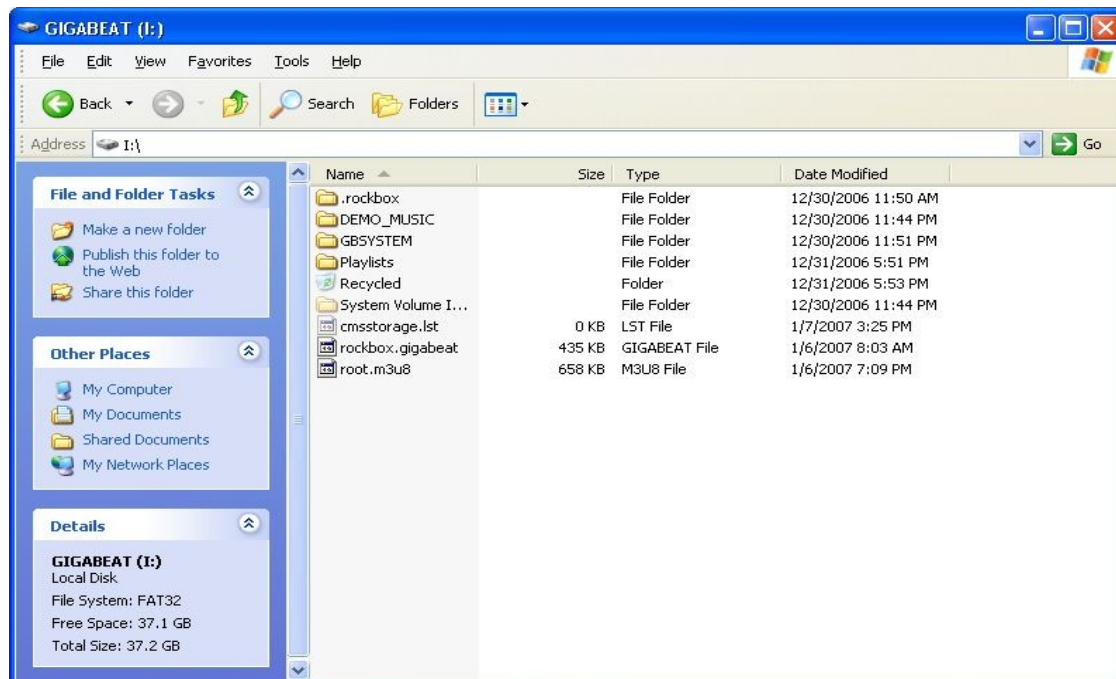
1. Connect your Gigabeat

Connect your Toshiba Gigabeat to your PC. Turn on your Gigabeat, connect the external power cable, then connect the USB cable directly. The USB Cradle for your Gigabeat will not work with Rockbox.

Your music player will appear as a USB disk drive on your computer.

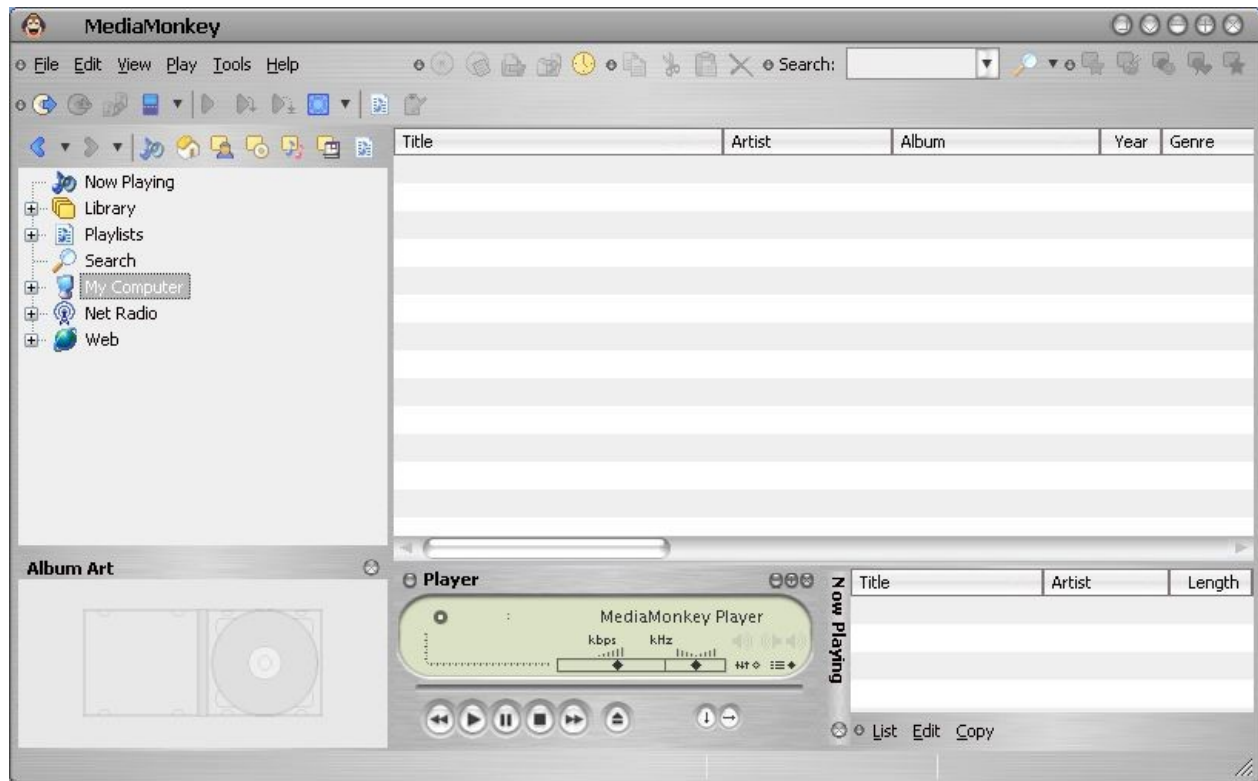


If you expand the I: drive, you can see the file system on your Gigabeat.

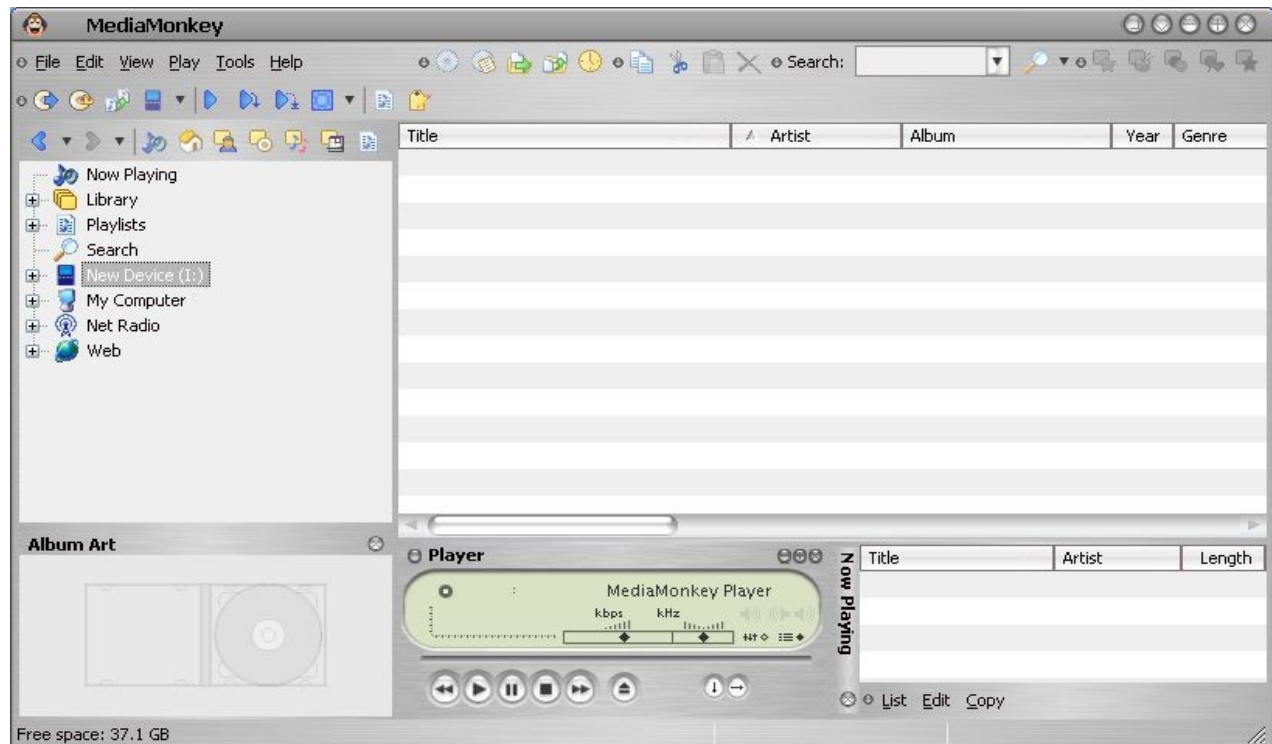


2. Start MediaMonkey

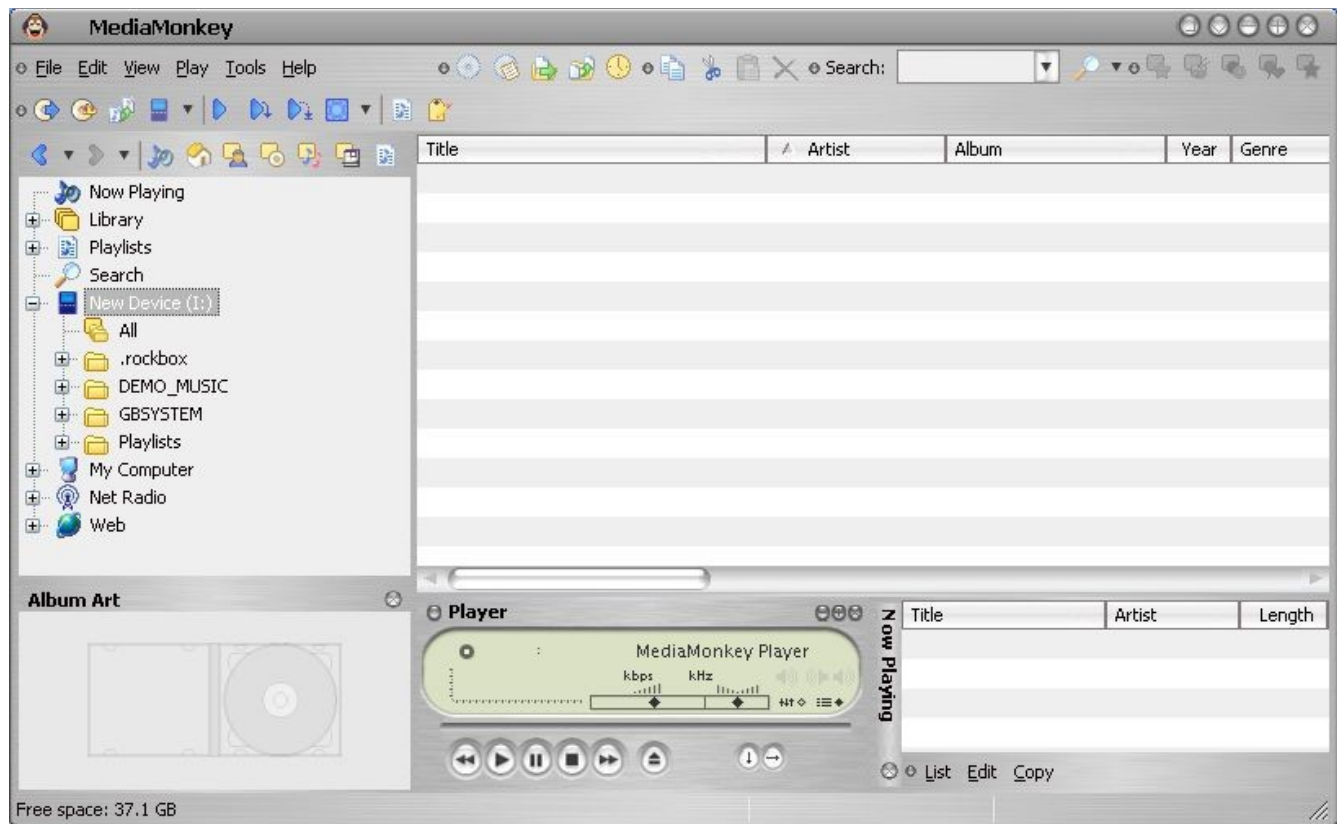
When you start MediaMonkey *before* connecting your Gigabeat it will look like the following picture. No portable audio devices are shown.



After you attach your Gigabeat to the PC, the portable audio device will appear in MediaMonkey.



You can expand the New Device (I: drive) and see the file system on your Gigabeat.

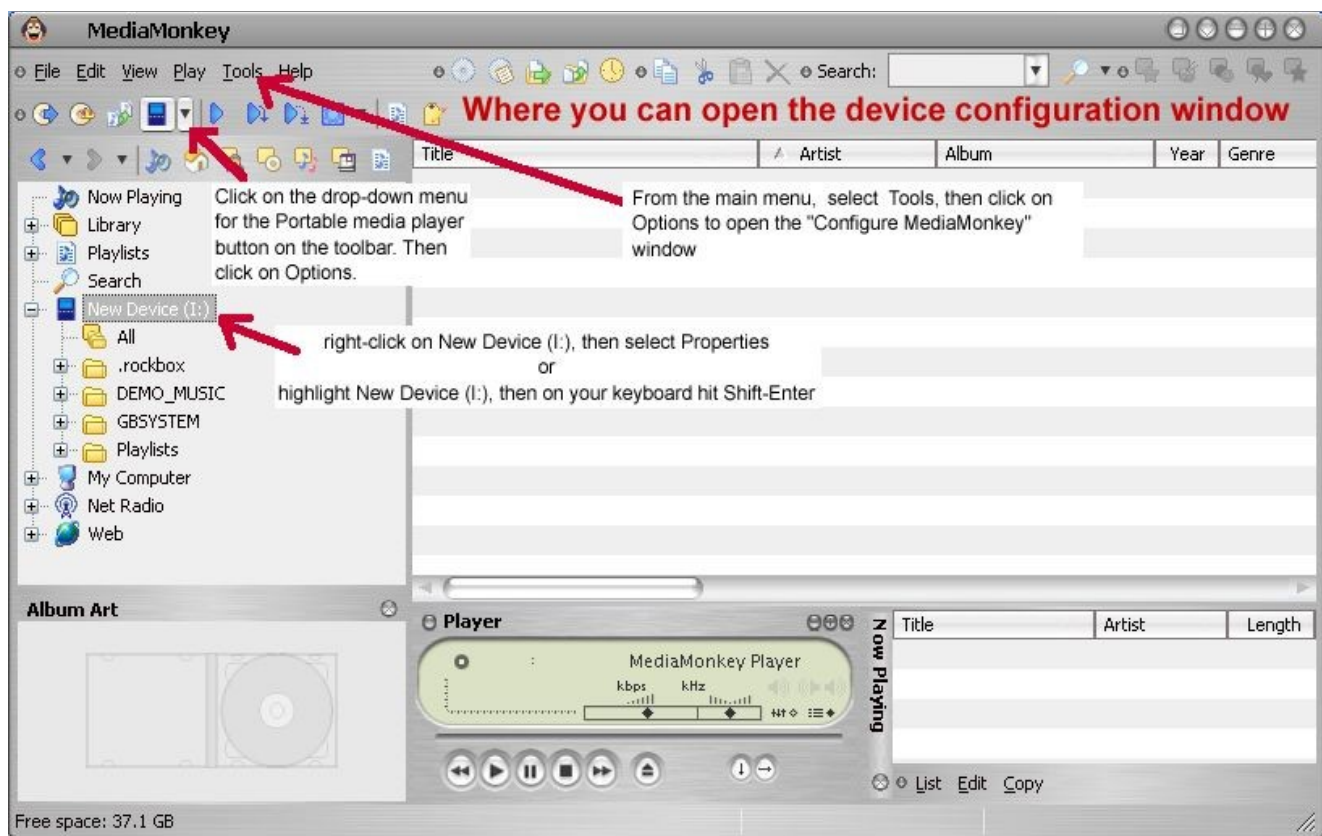


3. Configure your device

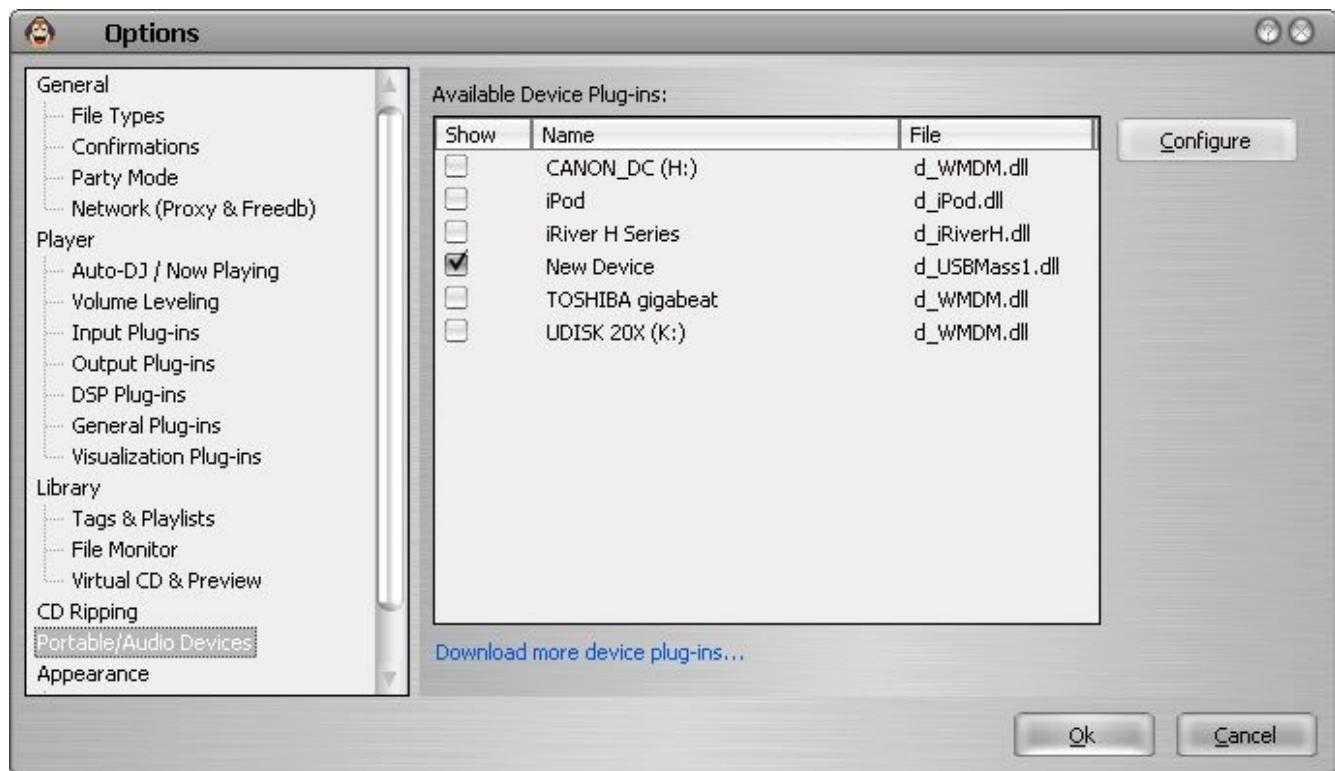
You can select your device and open the Device Profile configuration window in several places.

You can...

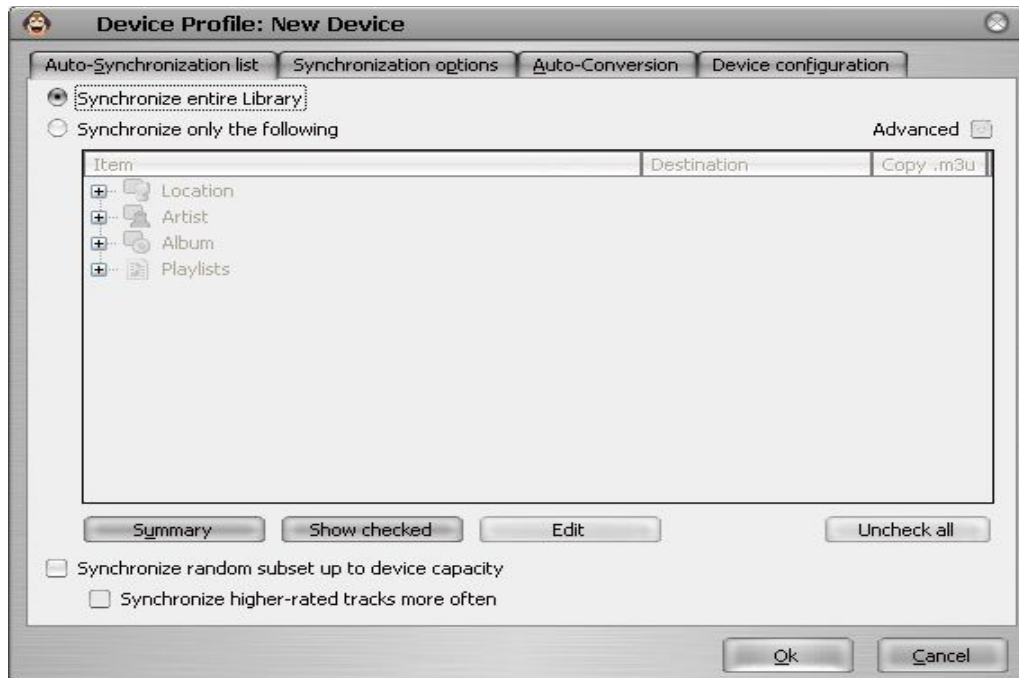
- right-click on New Device (I:), then select Properties
- highlight New Device (I:), then on your keyboard hit *Shift-Enter*
- click on the drop-down menu for the Portable media player button on the toolbar. Then click on Options
- From the main menu, select Tools, then click on Options to open the "Configure MediaMonkey" window. Next click on Portable/Audio Devices. Now in the available devices display, check the New Device (I:) (to show it in the available drop down), highlight the New Device (I:) in the list. Now click on the Configure button on the right to open the Device Profile window



Here is the MediaMonkey Options window from the Tools menu, Portable/Audio Devices selected.

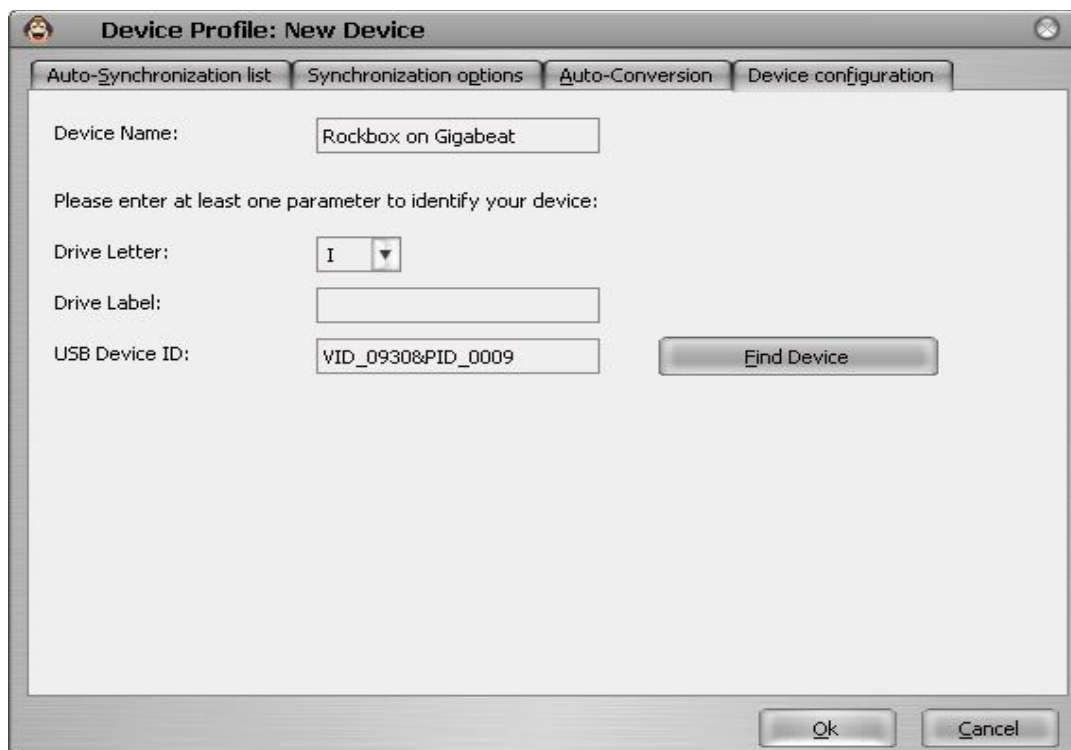


Here is a screen shot of the Device configuration window.



First, let's go to the **Device Configuration** tab.

On this tab, enter a device name and identify your device. To identify your device you need to update at least one of the available fields. You can select the drive, enter the drive label, or enter the USB device ID. If you do not know the USB device ID click on the Find Device button and select your device.



Now let's click on the **Synchronization options tab**.

The **first field** on this screen tells MediaMonkey where to put your music on your Gigabeat. You can use meta variables to use information from your music ID3 tags.

In the example pictured, the music tracks will be named: <Track#> - <Title>

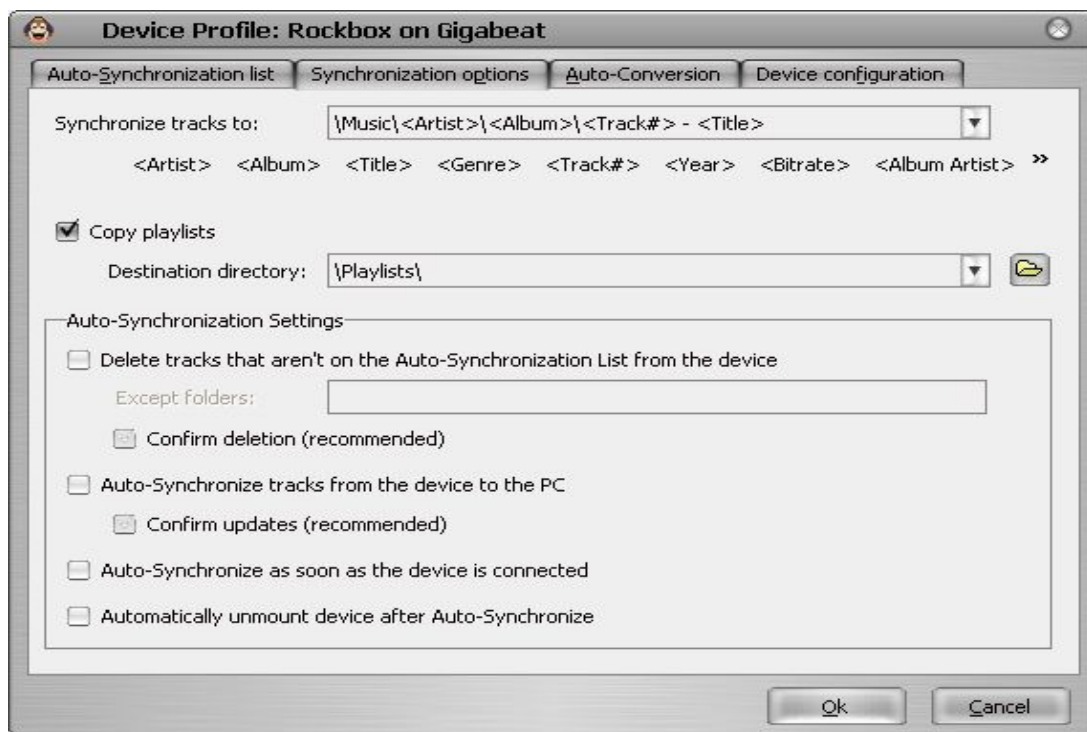
I like to put all my music in a folder named "Music" in the root of my player, so the folder the track will be written to is: \Music\<Artist>\<Album>\

I read in a forum that Gigabeat Rockbox currently doesn't support sorting tracks by ID3 fields, so if you want to display your tracks in track order, prefix the track name with <Track#>.

The **second field** on the screen is where you can check to Copy playlists and tell it where to write your playlists.

The Auto-Synchronization Settings are pretty self-explainable. If additional information is needed see MediaMonkey help.

The online MediaMonkey Help link is <http://www.mediamonkey.com/sw/webhelp/frame/index.html>.



Next click on the **Auto-Synchronization list tab**.

This screen is where you identify what you want to sync/add to your player. The screen shot shows the whole library as your source checked.

The check-boxes at the bottom can be used to set additional behaviors by MediaMonkey when transferring music.



If you check Synchronize only the following, you can select a subset of tracks from your library, or from a location, or select a playlist. The summary tells you how many tracks are selected and the capacity of your player. Again, more information about these options is available in MediaMonkey Help.



Now for the last tab, **Auto-Conversion**.

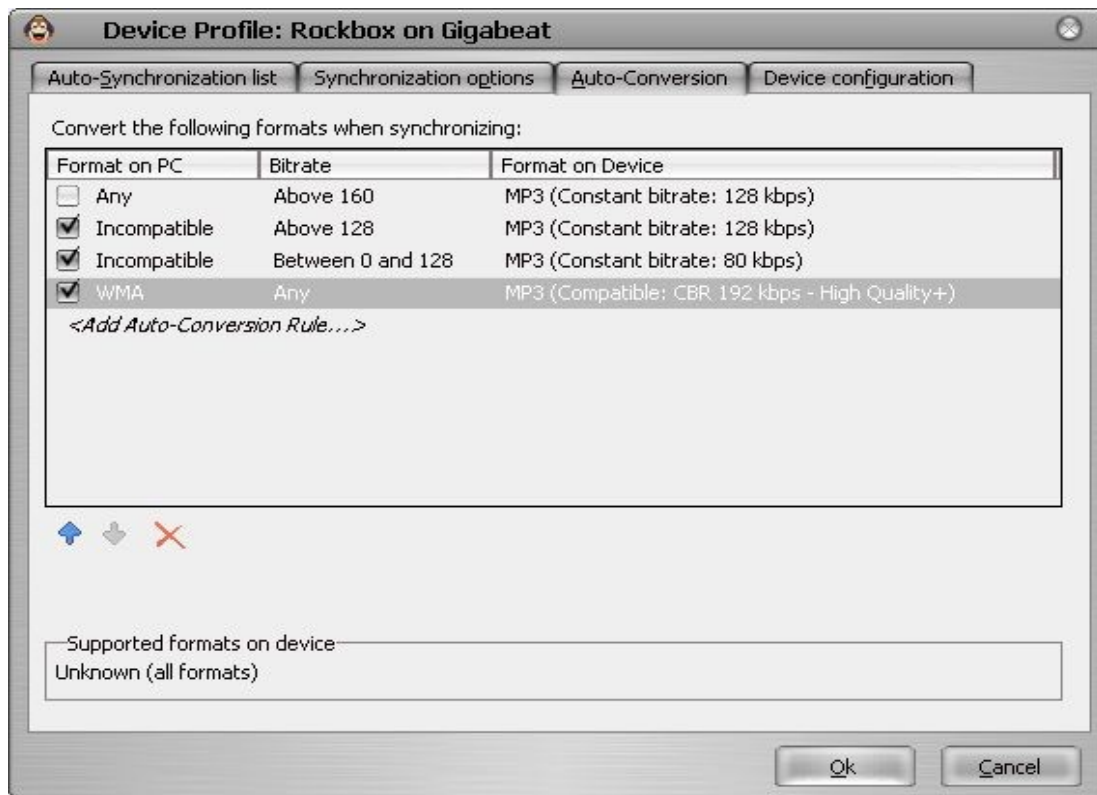
I think this function is not available for the free version of MediaMonkey. But if you do have the “Gold” version here is what it's for.

MediaMonkey has tools that can convert tracks from one codec to another.

For Rockbox on Gigabeat this is handy because at the time this was written “.wma” (windows media) tracks are not supported. A rule has been setup in this screen to convert my “.wma” tracks to “.mp3” tracks on the fly.

If you have the free version, you can use other tools to convert your music to MP3 before synchronizing to your player.

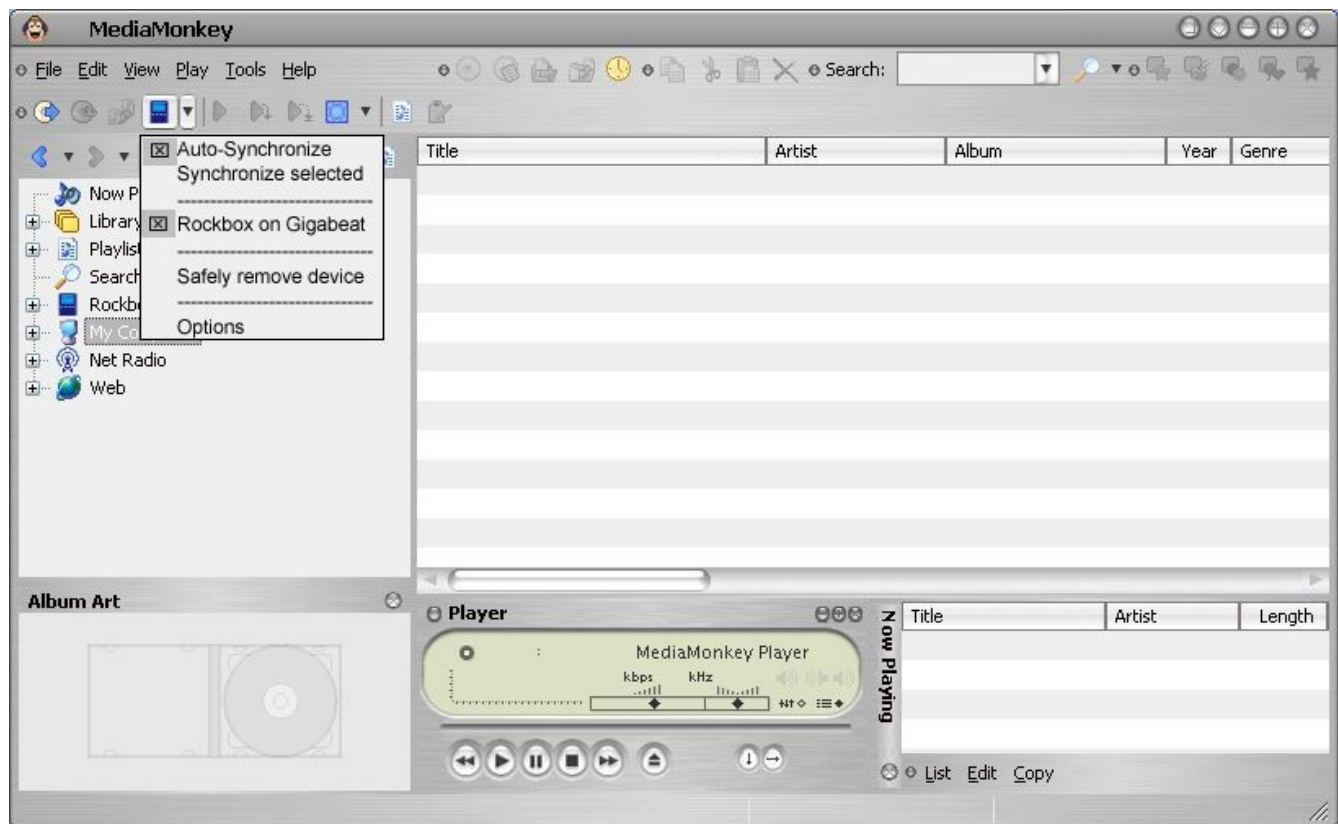
More information about this screen is available in MediaMonkey Help.



Okay, now that you've setup your device and selected what music you want to sync to your player, click the Ok button to close the window. You'll notice that your device will now be identified using the device name you entered instead of “New Device”.

4. Let's Sync something using Auto Synchronize

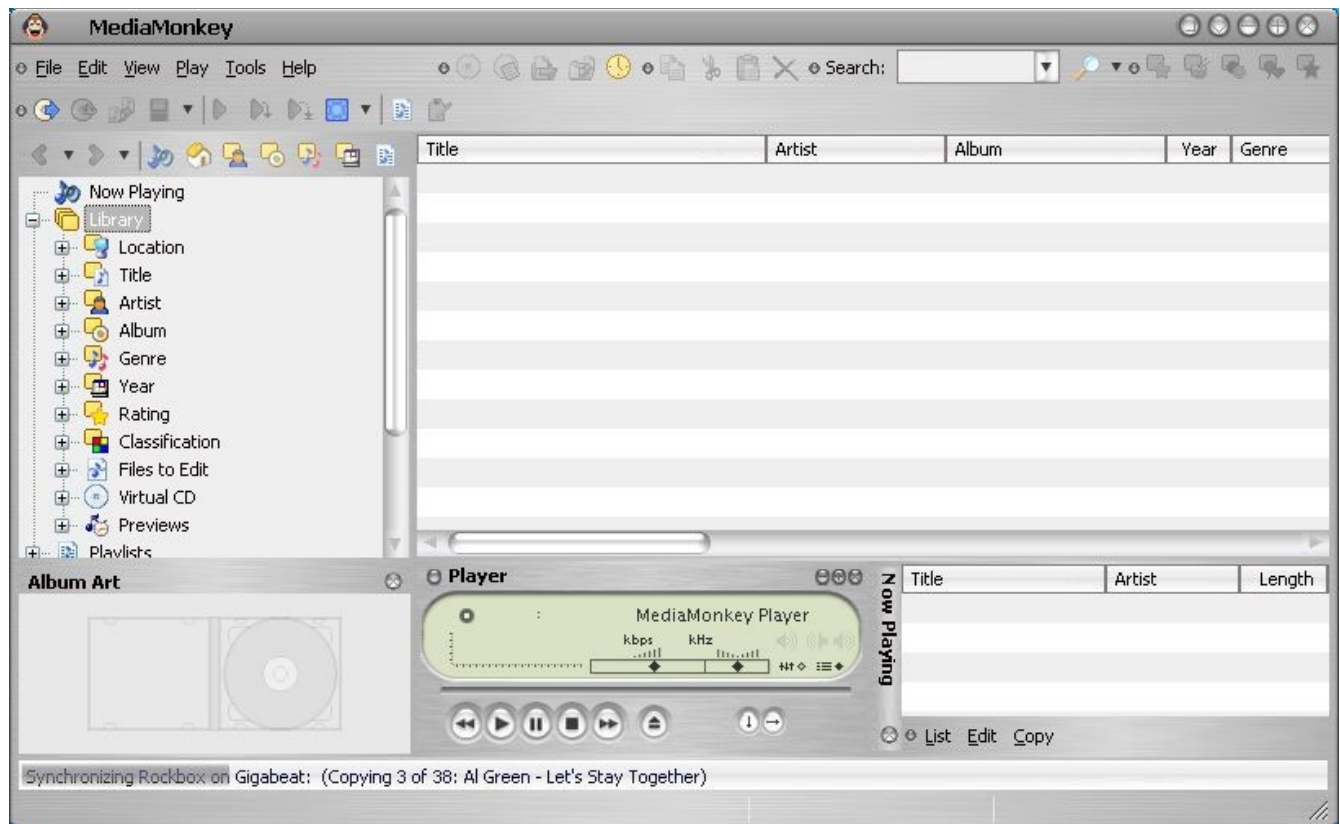
Now that you've setup everything, go to the Device button at the top of the main screen. Click on the drop menu (the v) and click on the Auto-synchronization option, which ever you setup. Then open the device menu again and make sure there is a check mark next to your device. If there isn't, click on your device.



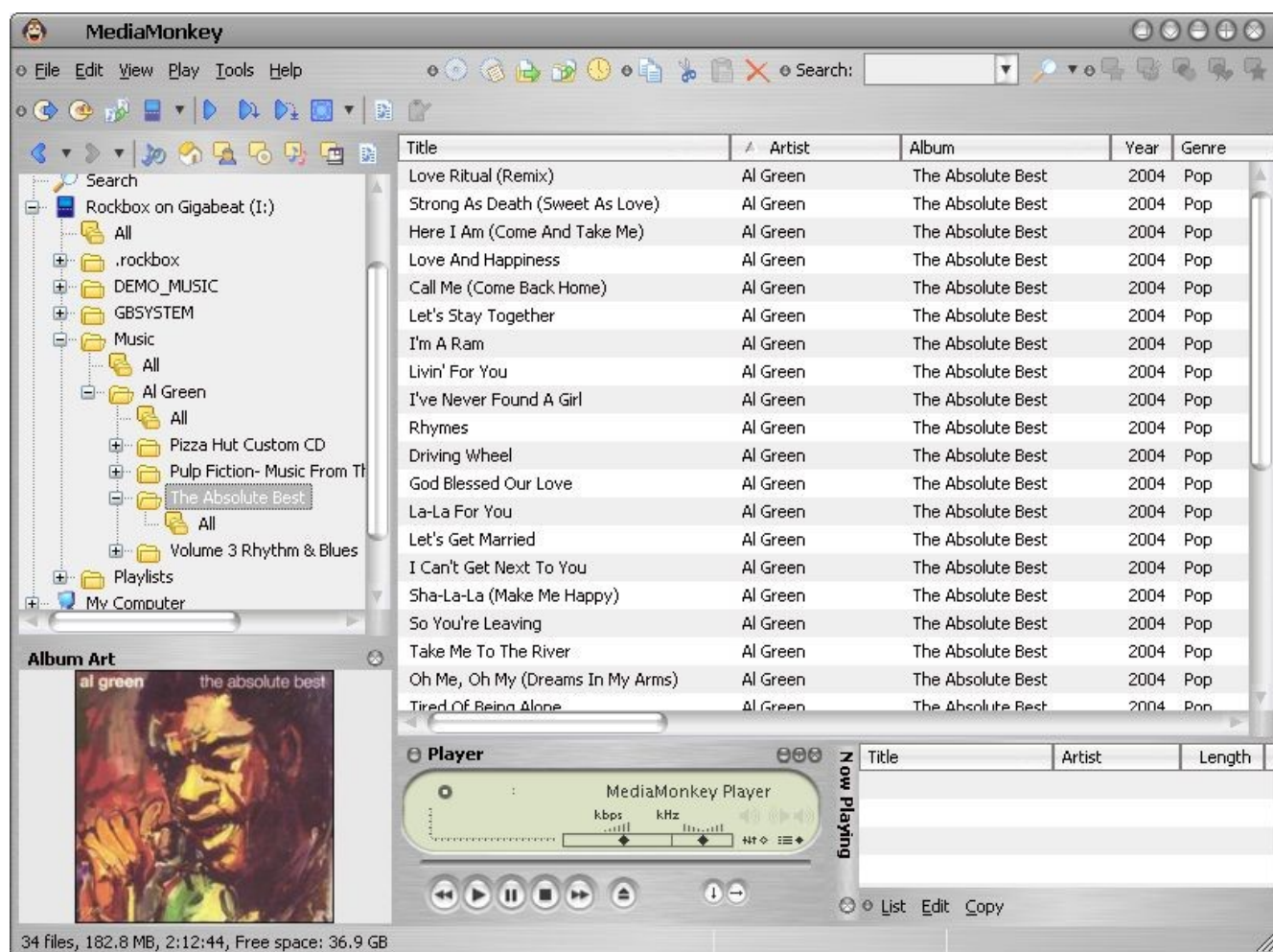
To start your synchronization to your device:

- click on the device button in the toolbar or
- right-click on the device in the library tree, then click on Auto Synchronize

A status bar will display, showing progress. After you've started the sync process, if you right click on the status bar you can select Terminate to stop it.



When done writing tracks to your player, you can expand the file tree for your device and see the Music folder and look at the tracks on the player.



Then finally, you can expand the drop menu for the device button on the toolbar and click on the remove device option. Unplug your player and enjoy.

Remember, in Rockbox you have to initialize the database the first time you load your player.

That's it. Again, more information is available in MediaMonkey Help.

5. Let's Sync something using Synchronize Selected

The previous section described how to set-up the autosync features. Sometimes maybe you just added one new CD to your collection. To save time you just want to push that new music to your player.

This is easy too.

Instead of going to the auto-synchronize options screen and unselecting everything, then selecting just the folders you want follow the following procedure.

1. Select the tracks you want to transfer from your MediaMonkey library. The selected tracks will appear in the track window.
2. In the drop down menu for the media player device in the toolbar, select Synchronize selected.
3. Click on the media player device button in the toolbar to start the Synchronization process. A status bar will display. After you've started the sync process, if you right click on the status bar you can select Terminate to stop it.

6. Other stuff

As briefly mentioned earlier, MediaMonkey can be used to create playlists. The tools for creating playlists are great. Some of the auto playlist tools are not available in the free version. What little I've done with playlists using the Gold version, the tools are easy to use and give you an almost unlimited number of options. All your playlists can be saved and exported. Then you can save them on your player. More information available about playlists in MediaMonkey Help.

7. Links

Media Monkey website: <http://www.mediamonkey.com>

MediaMonkey Online Help: <http://www.mediamonkey.com/sw/webhelp/frame/index.html>

Rockbox Website: <http://www.rockbox.org>

Rockbox – Gigabeat Twiki: <http://www.rockbox.org/twiki/bin/view/Main/GigabeatInfo>

Rockbox Manual for Toshiba Gigabeat F series: <http://download.rockbox.org/manual/rockbox-gigabeatf/rockbox-build.html>

Rockbox WPS Gallery for Toshiba Gigabeat:

<http://www.rockbox.org/twiki/bin/view/Main/WpsGigabeatF>

My Gigabeat – everything Gigabeat: <http://www.mygigabeat.com>